

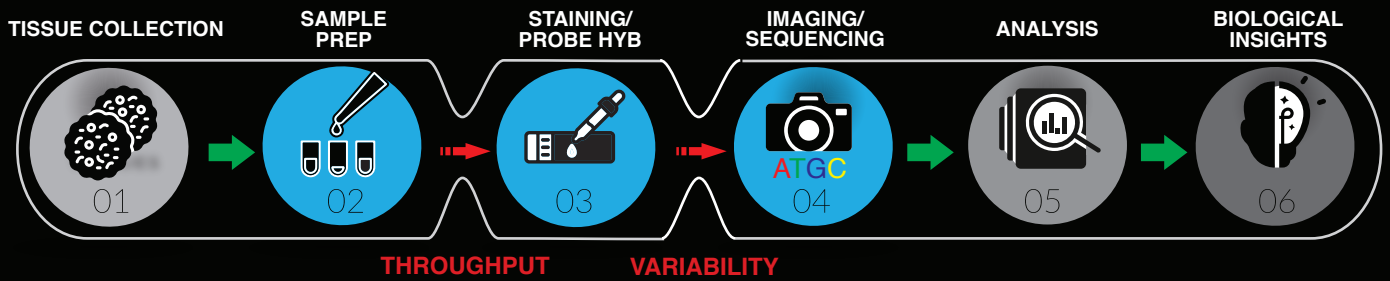


# SPATIAL STATION



Automating Spatial Biology with Pushbutton Precision

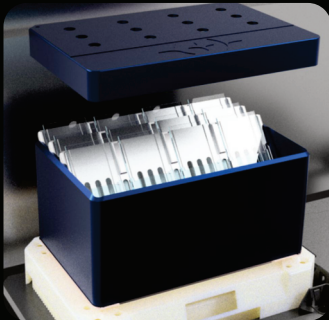
# MAJOR CHALLENGES OF SPATIAL BIOLOGY



## THE SOLUTION

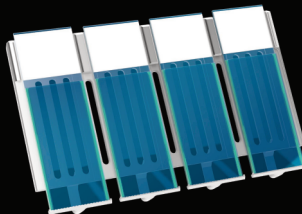


### HEATING + COOLING



Thermal module ranges from 0-99°C to fit all protocols

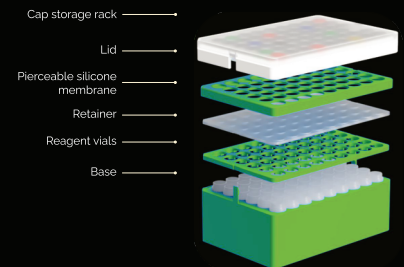
### CAPILLARY GAP STAINING



Complete flow uniformity with Spreader Wicks™, while minimizing staining volume (100ul)

### PANEL MIXING

#### P54 Panel Mixing Module



Eliminate the need for individual, manual tube handling with an all-in-one solution antibody mixing and storage.

"With the Parhelia Spatial Station, we're delivering a solution that will accelerate research by automating the intricacies of sample prep – a task that, until now, has been a significant bottleneck for many scientists."

Nikolay Samusik,  
CEO and Co-founder  
Parhelia Biosciences



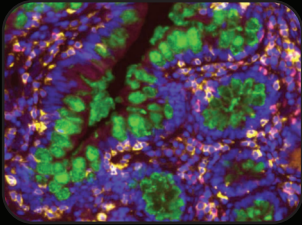


# SPATIAL STATION

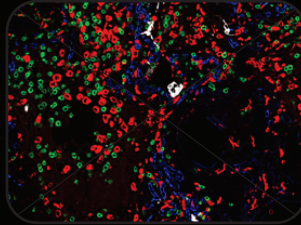
THE INTEGRAL SOLUTION FOR SPATIAL WORKFLOWS

## VERIFIED APPLICATIONS

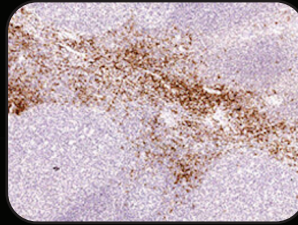
DEWAX/HIER



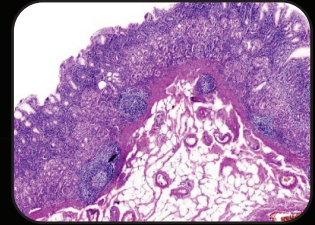
CODEX/PCF



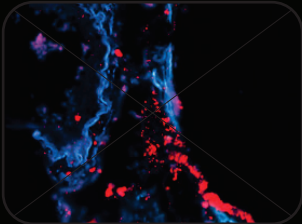
IHC



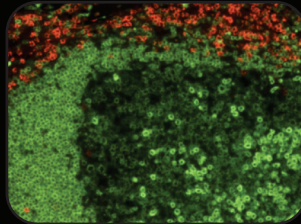
H&E



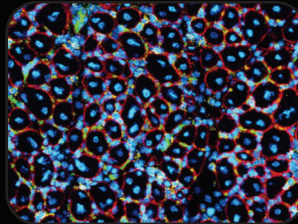
RNASCOPE



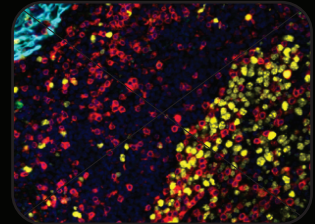
IF/CYCIF/OPAL



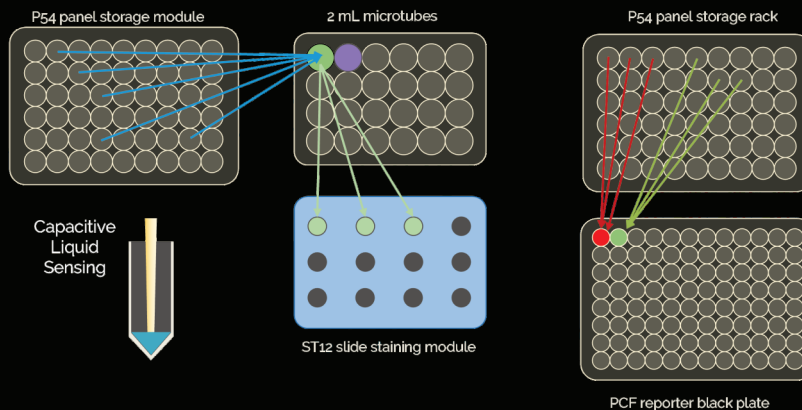
IMC



INSITUPLEX



## PUSHBUTTON PANEL MIXING SOLUTIONS



The promise of spatial biology is within reach

# SPATIAL STATION

## Dimensions

24 x 22 x 24 in

## Weight

85 lbs

## Heating/Cooling

YES/YES

## Sample Throughput

12-48

## Programming Flexibility

INFINITE

## Panel Mixing

YES

## Staining Volume

100  $\mu$ L

## Dead Volume

NONE

## XYZ AUTO-CALIBRATION

Eliminate the need for manual pipette calibration

## LIQUID SENSING

Ensures all reagents are present in sufficient quantities



## PROTOCOL CREATION VIA UI

Effortlessly create, edit, and customize protocols with an intuitive touchscreen interface

## LABWARE AUTO-DETECTION

Built in camera tracks labware placement and counts the tips



Connect with us  
[sales@parheliabio.com](mailto:sales@parheliabio.com)